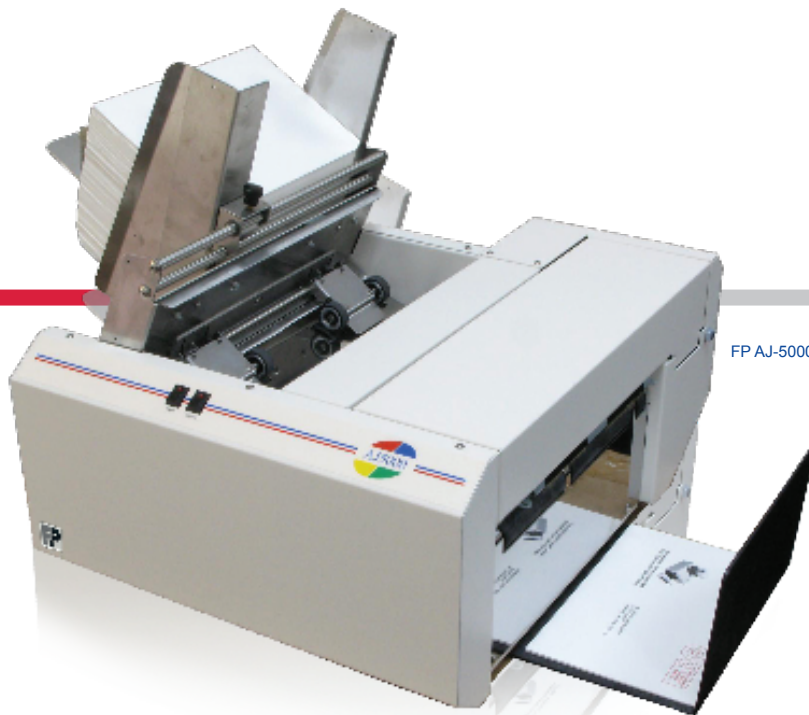


# IMAGESTAR

At your fingertips.



FP AJ-5000



FP AJ-300/500



FP AJ-1000



FP AJ-2650/2800

## Desktop Address Printing Systems

### THE PERFECT ADDRESSING SYSTEM FOR YOUR BUSINESS NEEDS.

Leave it to FP Mailing Solutions to offer a full line of comprehensive, efficient, and effective address printing solutions designed to fit conveniently on any tabletop. Print addresses, attention lines, postal barcodes, return addresses, and permit indicia. This complete selection provides the flexibility you need to cost-effectively boost productivity and enhance image quality.

Ready for Intelligent Mail Barcoding? Meet all USPS® Requirements with Address Printing systems from FP. Our systems are fully capable of printing IMB barcodes, the next generation of barcode technology, which allows for lower postal rates, faster delivery, and so much more. With lightening speed, impressive versatility, intelligent design, and ease of use, these desktop addressing systems simply offer it all. From entry-level to top-of-the-line, there's a high-speed, brilliant color printer ready to handle your address printing needs.



MAILINGSOLUTIONS  
AN FP GROUP COMPANY

## FP AJ-5000

### KEY ADVANTAGES

The [FP AJ-5000](#) is an entry-level inkjet address printer with the ability to print in brilliant, full-process color. Its shuttle-head design gives it a print area of 8.5" wide by 14.0" high, allowing printing of entire/complete postcards, envelopes, flats, and documents all in a single pass. The [FP AJ-5000](#) is capable of printing IMB, including USPS® Delivery Point Barcodes, to qualify for lower postal rates and faster delivery.

### SPECIAL FEATURES

- Shuttle-head printer allows printing on entire document
- Integrated feeder
- Parallel and high-speed USB 2.0 port



### SPECIFICATIONS

<b>Speed</b>	Up to 4,300 pcs./hr.
<b>Print Quality</b>	From 300 to 1200 dpi
<b>Print Area</b>	8.5" W x 14.0" H
<b>Material Size</b>	Length (5.0" to 14.0") Width (3.0" to 12.0")
<b>Material Thickness</b>	Up to 1/16"
<b>Dimensions</b>	19.50" W x 22.00" L x 17.25" H
<b>Weight</b>	40 lbs.
<b>Print Technology</b>	HP56/HP57 Inkjet

## FP AJ-300 and FP AJ-500

### KEY ADVANTAGES

The [FP AJ-300](#) and [FP AJ-500](#) are fixed-head, entry-level inkjet address printers. They offer 1.5" of print area and a durable feeding/transport design. The [FP AJ-500](#) system has a variable head and extended hopper that can hold up to 500 #10 envelopes at a time. It also can take materials up to a class-leading 3/16" thick. It is capable of printing IMB, including USPS® Delivery Point Barcodes, to qualify for lower postal rates and faster delivery.

### SPECIAL FEATURES

- 1.5" of print from one print module
- Clutch-control integrated feeder
- Parallel and high-speed USB 2.0 port



### SPECIFICATIONS

<b>Speed</b>	Up to 11,000 pcs./hr. (FP AJ-300) Up to 30,000 pcs./hr. (FP AJ-500)
<b>Print Quality</b>	From 150 to 600 dpi
<b>Print Area</b>	1.5" x 14.0" w/ 9.5" Vertical Range
<b>Material Size</b>	Length (5.0" to 14.0") Width (3.0" to 14.0")
<b>Material Thickness</b>	Up to 1/8" (FP AJ-300) Up to 3/16" (FP AJ-500)
<b>Dimensions</b>	19.0"H x 21.0"L x 20.5"W
<b>Weight</b>	53 lbs.
<b>Print Technology</b>	HP45A Inkjet

## FP AJ-1000

### KEY ADVANTAGES

The versatile [FP AJ-1000](#) has a feed system that has three rows of high grip rollers and the capacity for materials up to 1/4" thick. A key feature is the split 3+2 printhead configuration that allows mailers to print the recipient address, return address, and permit indicia all in a single pass. It is capable of printing IMB, including USPS® Delivery Point Barcodes, to qualify for lower postal rates and faster delivery.

### SPECIAL FEATURES

- 2.5" of print from two print modules
- Clutch-control integrated feeder
- Electronic thickness control (1/4")
- Parallel and high-speed USB 2.0 Port



### SPECIFICATIONS

<b>Speed</b>	Up to 30,000 pcs./hr.
<b>Print Quality</b>	From 150 to 600 dpi
<b>Print Area</b>	2.5" x 15.0" w/ 9.0" Vertical Range
<b>Material Size</b>	Length (5.0" to 15.0") Width (3.0" to 13.5")
<b>Material Thickness</b>	Up to 1/4"
<b>Dimensions</b>	11.50"H x 19.56"L x 20.00"W
<b>Weight</b>	69 lbs.
<b>Print Technology</b>	HP45A Inkjet

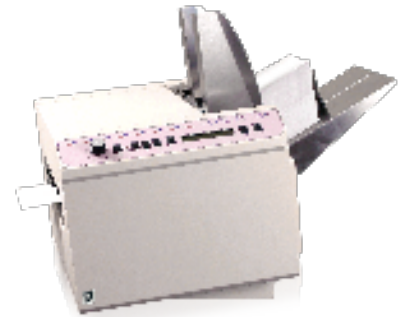
## FP AJ-2650 and FP AJ-2800

### KEY ADVANTAGES

Print graphics, logos, and barcodes at up to 600 dpi with the [FP AJ-2650](#), a six-head printer, and [FP AJ-2800](#), an eight-head printer. A key feature is the split multiple printhead configuration that allows mailers to print the recipient address, return address, and permit indicia all in a single pass. Built-in cartridge station keeps your mailroom tidy and extends the life of print cartridges, helping save on expenses and environmental impact. Unique top-load feed mechanism quickly processes up to 750 No. 10 envelopes at up to 3/8" thickness. Visible ink level display helps ensure mailroom productivity.

### SPECIAL FEATURES

- Up to 4" of stitched printing in one pass
- Built-in cartridge station
- Parallel and high-speed USB 2.0 port
- Optional Conveyor/Stacker and Drop Tray



### SPECIFICATIONS

<b>Speed</b>	Up to 36,000 pcs./hr.
<b>Print Quality</b>	From 150 to 600 dpi
<b>Print Area</b>	3.0" x 17.0" w/ 11.0" Vertical Range (FP AJ-2650) 4.0" x 17.0" w/ 11.0" Vertical Range (FP AJ-2800)
<b>Material Size</b>	Length (5.0" to 17.0") Width (3.0" to 13.5")
<b>Material Thickness</b>	Up to 3/8"
<b>Dimensions</b>	23" H x 28" L x 22" W
<b>Weight</b>	90 lbs.
<b>Print Technology</b>	HP45A Inkjet



**MAILINGSOLUTIONS**  
AN FP GROUP COMPANY



Call your FP representative today to order your [FP Address Printing System](#), and ask about our family of mailing systems and solutions.

**When you have questions, we have solutions.** Our commitment to fast, attentive customer service is just one of the reasons why we're the fastest-growing USPS®-approved mailing systems vendor in the U.S.

**FP Mailing Solutions**  
140 N. Mitchell Ct., Suite 200  
Addison, IL 60101-5629  
800.341.6052  
[www.fp-usa.com](http://www.fp-usa.com)

BR1020

